

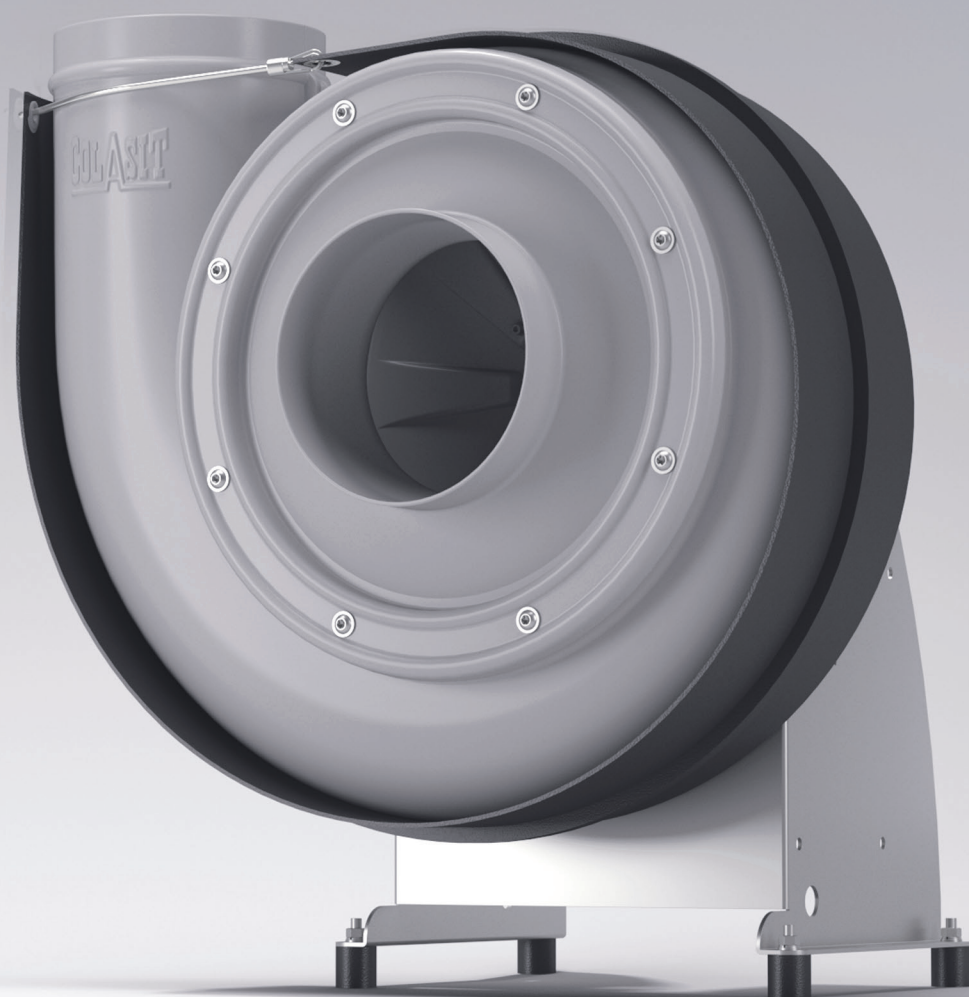
COLASIT

+ COLASIT

CMVpro

Plastic fan

Best in
Class



HIGHEST **EFFICIENCY** | EXCELLENT **ACOUSTICS** | SWISS MADE



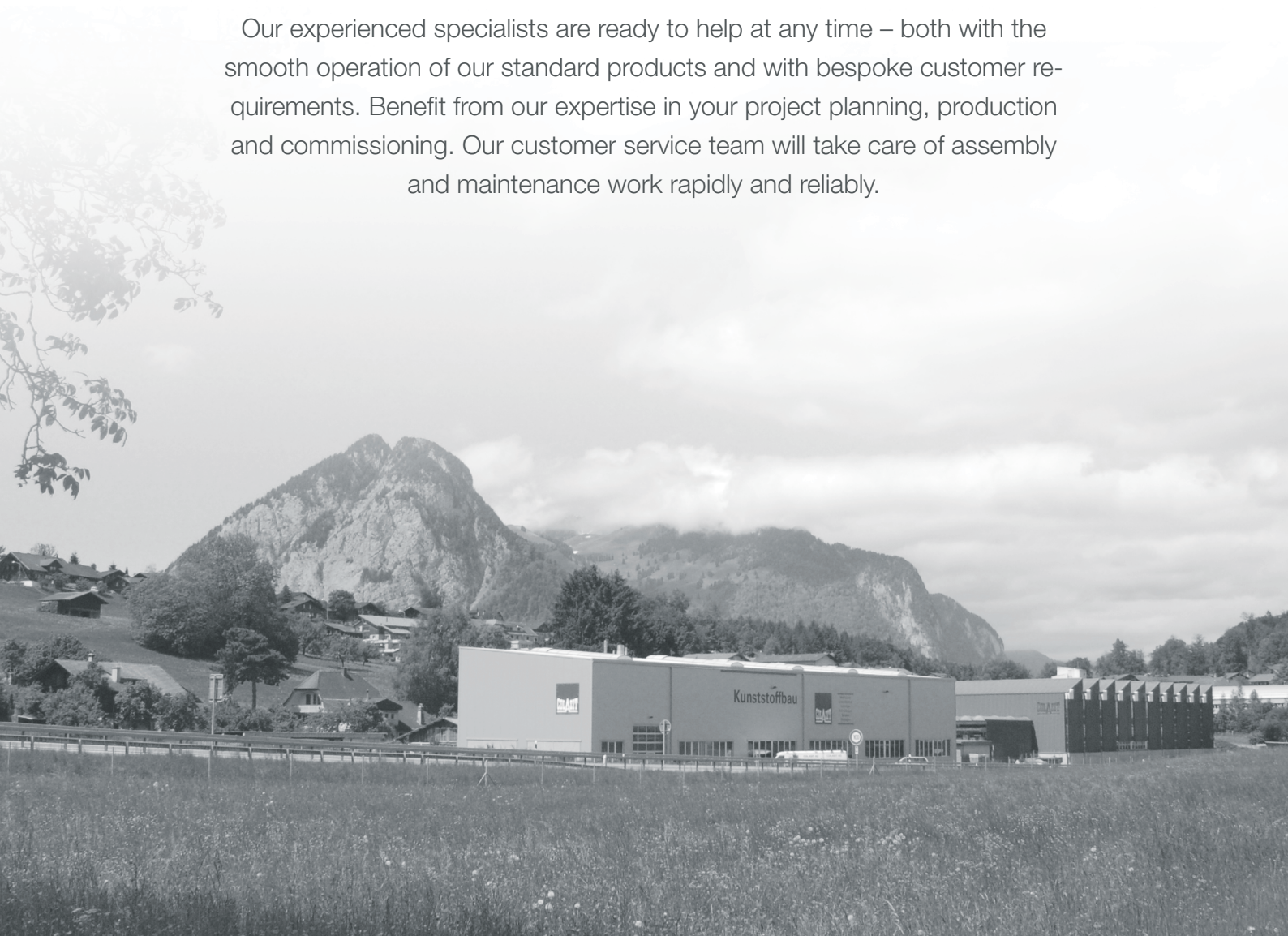
Quality from tradition

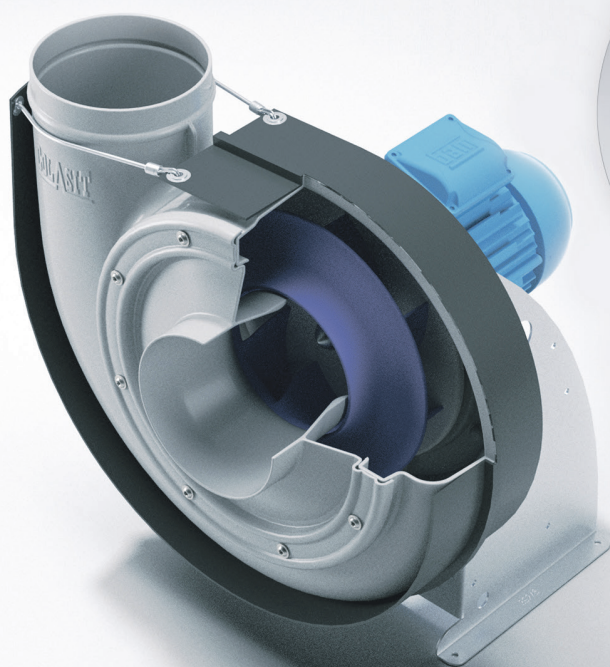
— Since 1945 —

COLASIT is one of the world's leading companies in product manufacture and plant construction in the field of corrosion-resistant plastics. Our skilled workforce guarantees top quality and attractive prices on all five continents. We accompany you during planning, through production to commissioning.

Since 1945, COLASIT has provided customers around the world with Swiss-quality high-performance products.

Our experienced specialists are ready to help at any time – both with the smooth operation of our standard products and with bespoke customer requirements. Benefit from our expertise in your project planning, production and commissioning. Our customer service team will take care of assembly and maintenance work rapidly and reliably.





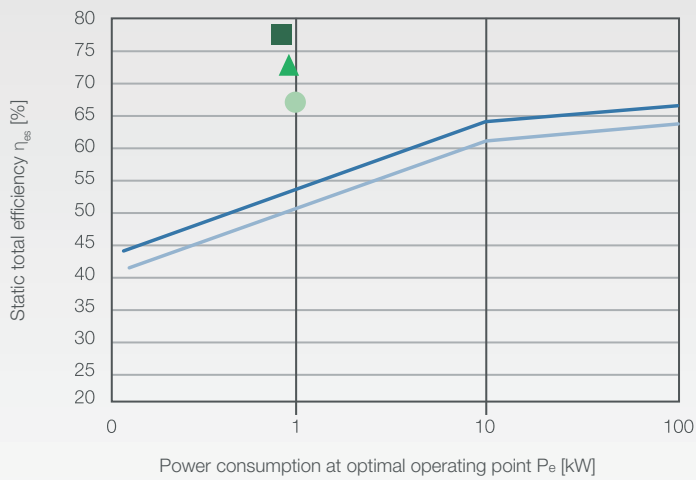
CMVpro

Plastic fan
for chemically contaminated exhaust air

ENERGY-SAVING INTO THE **FUTURE**

CMVpro – the latest generation of fans from COLASIT. With our new CMVpro plastic fan, we combine environmentally friendly high performance with efficient peak values, making the CMVpro the best fan in its class in terms of efficiency and its broad characteristic curve field. Many years of experience and substantive innovations since 1945 have made COLASIT a leading company worldwide in the development and manufacture of products made of corrosion-resistant plastic.

Overall efficiency - CMVpro



ErP directive for fans:

MEPS

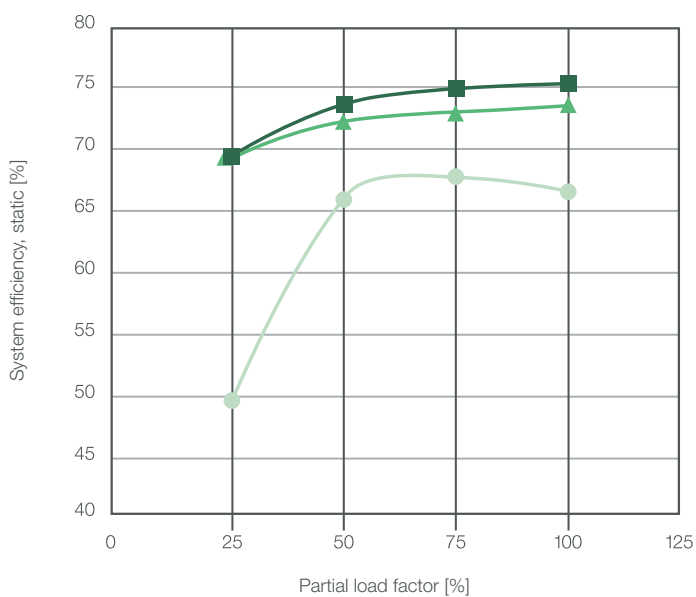
(Minimum Energy Performance Standards)

- MEPS 2015
- MEPS 2023
- eta-es CMVpro - IE3
- eta-es CMVpro - IE5*
- eta-es CMVpro - IE6*

* acc. IEC 60034-30-2

PEAK EFFICIENCY VALUES

CMVpro system efficiency at partial load



LOWER POWER CONSUMPTION
CMVpro

- System efficiency st. [%]
CMVpro with IE3
- System efficiency st. [%]
CMVpro with IE5*
- System efficiency st. [%]
CMVpro with IE6*

* acc. IEC 60034-30-2

BEST VALUES IN THE PARTIAL LOAD RANGE

Drive types

We also offer you the perfect solution in the field of drive technology, and provide you with a bespoke, energy-efficient drive with selected components.



ASYNCHRONOUS MOTOR IE3/IE4

Efficiency:

approx. 82.7% / 85.2%

Power range:

0.75 – 375 kW

Special features:

The most used industrial motor /
in combination with frequency converter
(IP20, IP55, or direct installation)



PM MOTOR IE5

Efficiency:

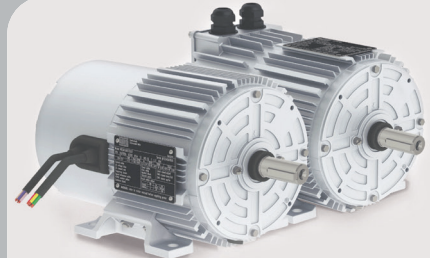
approx. 89.3%

Power range:

0.40 – 55 kW

Special features:

Permanent magnet motor
in combination with frequency inverter
(Modbus, 0-10 V)



PM/EC MOTOR IE6

Efficiency:

approx. 91.5%

Power range:

0.37 – 4 kW

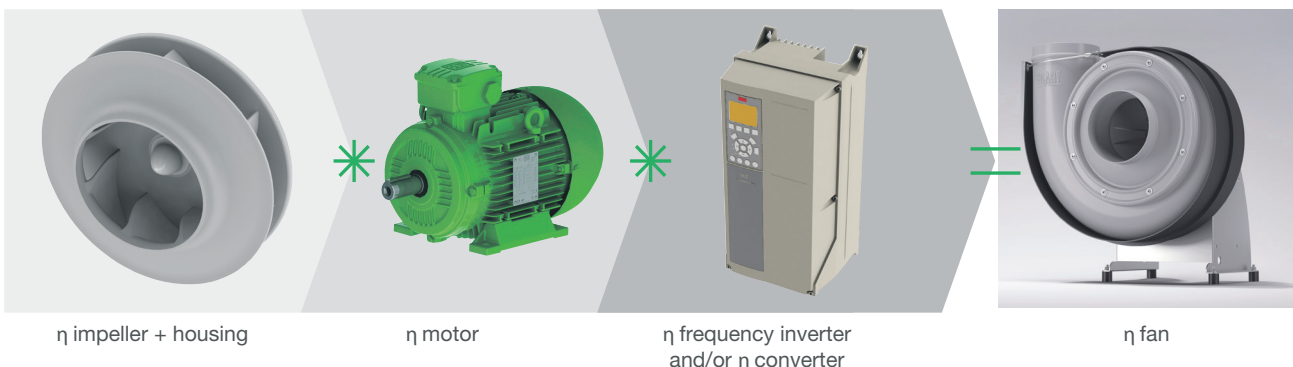
Special features:

PM/EC MOTOR
Electronically integrated

Efficiency data for 1.1 kW, 3000 rpm respectively with no frequency inverter and/or controller,
IE5 and IE6 motors and fans with these motors are eligible.

EXHAUST AIR ON IN MOTION – WORLDWIDE

In accordance with the ErP directive, it is worth noting that the overall efficiency of the entire fan is decisive. The efficiencies of all the components used are of great importance in order to achieve the optimum.





CMVpro

Plastic fan

PREMIUM CHOICE - **BEST IN CLASS**



Key data

Flow:

Up to 13,500 m³/h

Static pressure:

Up to 2300 Pa

Mechanical efficiency:

Up to 83% total

Sizes:

125 | 160 | 200 | 250 | 315 | 400 mm

Drive



Version:

Direct (Standard IE3 to IE6)

Frequency converter

Motors:

Asynchronous motors

PM/EC motors

Explosion protected

Single-stage | multi-stage | variable



Housing

Flow-optimised housing shape

Material: PPs, PPs-el, PVDF

6 different blow-out positions

2 directions of rotation

Support



Dimensionally stable sheet metal construction

Electrogalvanised

V2A / 1.4301 / AISI 304

V4A / 1.4404 / AISI 316L



Impeller

Efficiency-optimised, highly efficient

Backward-curved profiled blades

Fully overmoulded aluminium hub

Adapter for simple impeller installation

Material: PPs, PPs-el, PVDF

ATEX



ATEX-certified: Zones 1 + 2,
Categories 2G + 3G, EPL Gb + Gc

Equipment groups IIA and IIB+H2

Temperature classes T3 – T4

Housing + impeller in PPs-el
also for Zone 2 with droplets

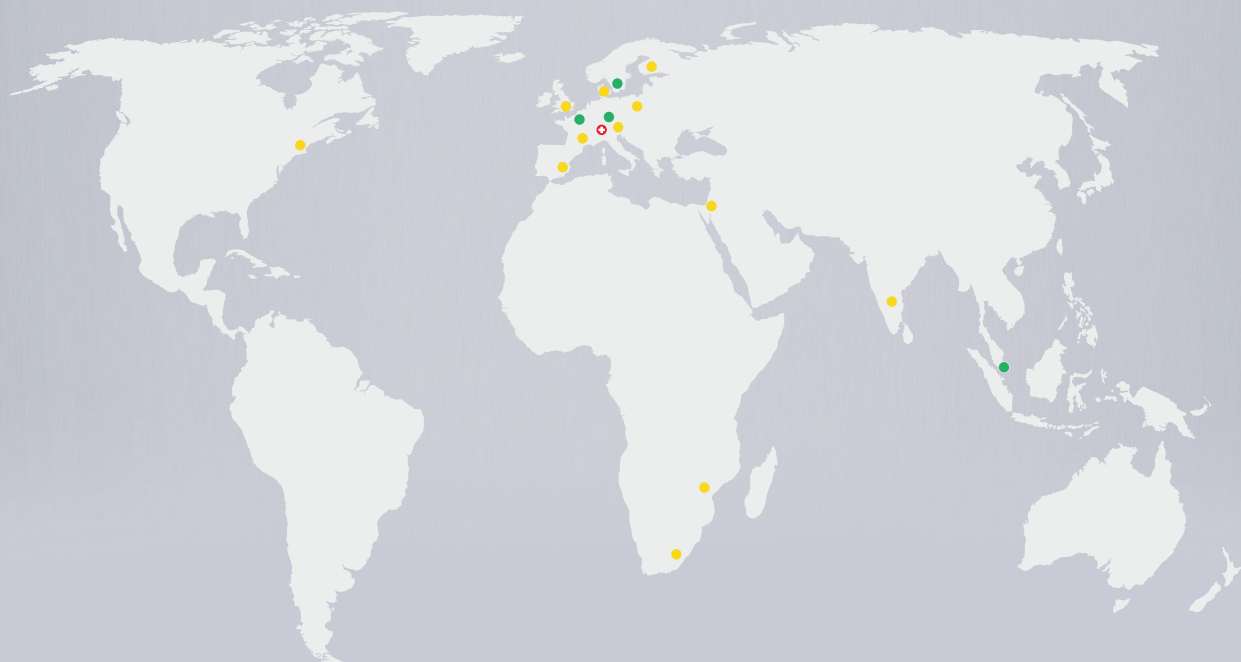




OUR PARTNERS AROUND THE WORLD



COLASIT AG · CH - 3700 Spiez



COLASIT Deutschland GmbH
DE - 51503 Rösrath



COLASIT Holland B.V.
NL - 5234 KC's-Hertogenbosch



COLASIT Scandinavia AB
SE - 53592 Kvänum



COLASIT ASIA Pte. Ltd.
SG - 757700 Singapore



= Headquarters



= Branch



= Partner

COLASIT AG

Kunststoffbau
Faulenbachweg 63
CH-3700 Spiez

Tel.: +41 (0) 33 655 61 61
E-mail: info@colasit.ch

www.colasit.ch