

# Formwork section for earth laid ventilation pipes

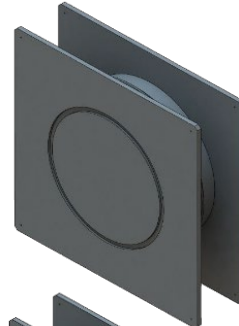
## Key data

Wall duct for large diameter pipes

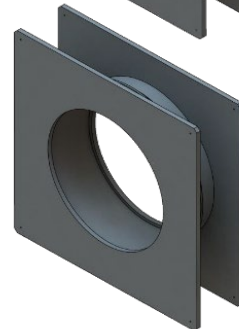
## Dimensions

for pipes: Ø500, Ø560, Ø630, Ø710, Ø800, Ø900, Ø1000

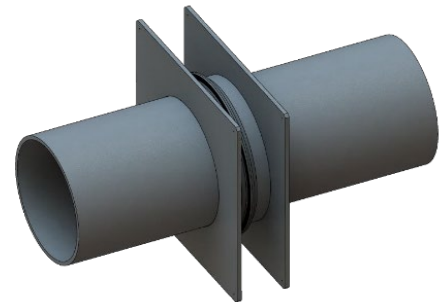
Closed  
(before concreting)



Cut out  
(after concreting)



Completely assembled  
(Tube carried out)



## Practical example



## Requirements

- At least 500mm clearance is required all around for welding

## Your advantages

- Safe and easy to install
- Safe in operation, as pipe is welded to formwork part

Edition 2023 • Subject to alteration • Copyright by COLASIT AG Spiez

COLASIT AG

Plastic construction • Faulenbachweg 63 • CH-3700 Spiez

Phone +41 (0)33 655 61 61 • plants@colasit.com

www.colasit.com

Competence in plastics. Worldwide.

